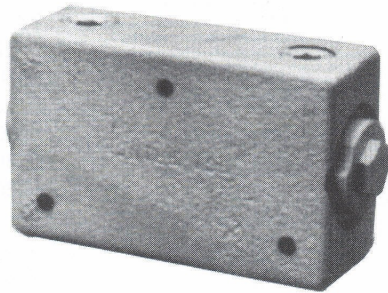
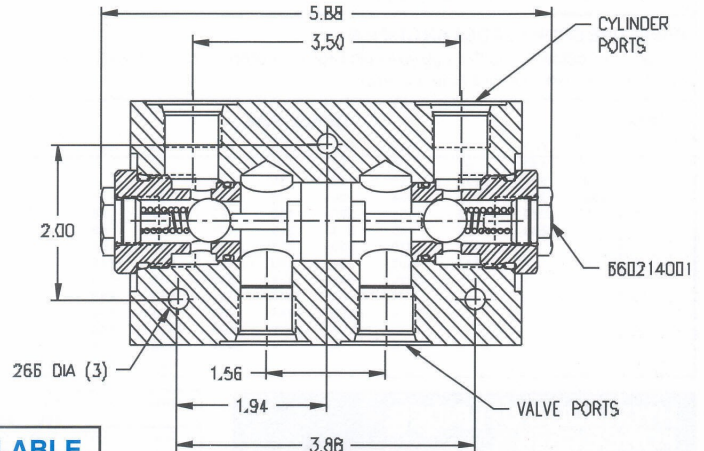
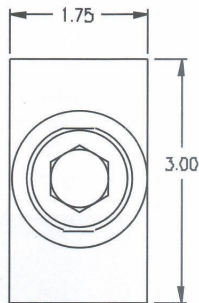
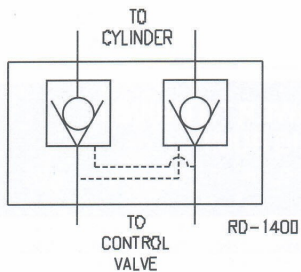


## PILOT-OPERATED CHECK VALVES

### MODEL RD-1400 LOCK VALVE DOUBLE PILOT-OPERATED



The PRINCE valve model RD-1400 is a double pilot-operated lock valve. This valve will lock a cylinder in place when a directional control valve is in the neutral position. In operation oil is directed to one of the valve ports and oil can free flow to the corresponding cylinder port. The pressure on this valve port will shift the pilot spool opening the opposite check valve. This will allow oil to return through the opposite check valve. This valve has a hardened steel seat and steel ball and therefore should not be used in applications requiring absolutely zero leakage. When using a pilot operated check to lower a heavy load the valve may chatter. An orifice in the line in some cases may be beneficial



#### STANDARD MODELS AVAILABLE

MODEL NUMBER	PORT SIZE
RD-1450	1/2 NPTF
RD-1475	3/4 NPTF

#### VALVE SPECIFICATIONS:

Pressure: 3000 psi max

Pilot Ratio: 4:1