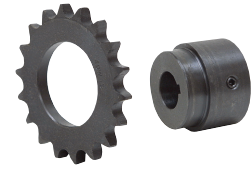


Weld-on Roller Chain Sprockets & Hubs

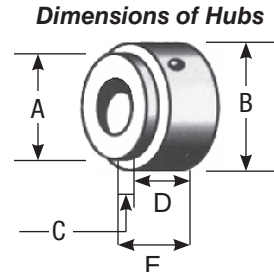
• Brand new. Weld on roller chain sprocket and hub assembly allows multiple combination of bore to sprocket types. Hubs have machined pilot for sprocket to slip over for easy alignment and welding. Keyway slot and set screw furnished with hub.

• **ORDERING:** Select sprocket by chain pitch and number of teeth, THEN select hub with matching letter code (V, W, X) and desired bore size.



# Teeth	40 Pitch				50 Pitch				60 Pitch			
	ITEM	Dia	Hub	Price	ITEM	Dia	Hub	Price	ITEM	Dia	Hub	Price
9	-	-	-	-	600975	2.09	V	\$5.75	600978	2.51	V	\$7.40
10	-	-	-	-	600976	2.30	V	\$5.75	600979	2.76	V	\$7.80
11	600912	2.00	V	\$4.75	600977	2.50	V	\$6.65	600980	3.00	W	\$8.25
12	600192	2.17	V	\$4.85	600208	2.71	W	\$7.20	600224	3.25	W	\$9.25
13	600193	2.33	V	\$4.60	600209	2.92	W	\$7.45	600225	3.49	W	\$9.35
14	600194	2.49	V	\$5.35	600210	3.12	W	\$7.90	600226	3.74	W	\$10.30
15	600195	2.65	V	\$5.55	600211	3.32	W	\$8.45	600227	3.98	X	\$11.20
16	600196	2.82	W	\$5.85	600212	3.52	W	\$8.70	600228	4.22	X	\$11.60
17	600197	2.98	W	\$6.40	600213	3.72	X	\$9.75	600229	4.47	X	\$13.20
18	600198	3.14	W	\$6.65	600214	3.92	X	\$9.90	600230	4.7	X	\$14.10
19	600199	3.23	W	\$7.00	600215	4.13	X	\$10.80	600231	4.95	X	\$15.55
20	600200	3.48	X	\$7.55	600216	4.33	X	\$11.40	600232	5.19	X	\$17.20
21	600201	3.62	X	\$8.40	600217	4.53	X	\$12.25	600233	5.46	X	\$18.80
22	600202	3.78	X	\$8.95	600218	4.72	X	\$13.10	600234	5.67	X	\$20.45
23	600981	3.94	X	\$9.65	600983	4.92	X	\$13.65	600986	5.91	X	\$22.15
24	600203	4.1	X	\$10.45	600219	5.13	X	\$14.50	600235	6.15	X	\$22.75
25	600204	4.26	X	\$11.10	600220	5.33	X	\$15.60	600236	6.4	X	\$24.50
26	600205	4.42	X	\$11.70	600221	5.53	X	\$16.75	600237	6.63	X	\$26.30
27	-	-	-	-	600984	5.72	X	\$18.00	600987	6.87	X	\$28.10
28	600206	4.74	X	\$12.85	600222	5.93	X	\$19.05	600238	7.15	X	\$30.10
29	600982	4.90	X	\$13.70	600985	6.12	X	\$19.90	600988	7.35	X	\$28.65
30	600207	5.06	X	\$14.55	600223	6.32	X	\$21.55	600239	7.59	X	\$33.85
31	600913	5.22	X	\$15.40	600934	6.52	X	\$22.65	600956	7.83	X	\$36.10
32	600914	5.38	X	\$16.30	600935	6.72	X	\$23.30	600957	8.07	X	\$37.60
33	600915	5.54	X	\$17.30	600936	6.92	X	\$22.00	600958	8.30	X	\$40.55
34	600916	5.70	X	\$18.20	600937	7.12	X	\$25.45	600959	8.54	X	\$42.85
35	600917	5.86	X	\$19.35	600938	7.32	X	\$26.65	600960	8.78	X	\$44.80
36	600918	6.02	X	\$20.20	600939	7.52	X	\$28.95	600961	9.02	X	\$37.30
37	600919	6.18	X	\$11.25	600940	7.72	X	\$31.40	600962	9.26	X	\$40.10
38	600920	6.33	X	\$22.30	600941	7.92	X	\$33.05	600963	9.50	X	\$41.70
39	600921	6.49	X	\$20.45	600942	8.12	X	\$30.00	-	-	-	-
40	600922	6.65	X	\$22.65	600943	8.32	X	\$33.95	600965	9.98	X	\$44.25
41	600923	6.81	X	\$23.45	600944	8.52	X	\$35.80	600966	10.22	X	\$45.05
42	600924	6.97	X	\$24.90	600945	8.72	X	\$37.80	600967	10.46	X	\$46.50
43	600925	7.13	X	\$25.80	600946	8.91	X	\$25.75	600968	10.70	X	\$38.90
44	600926	7.29	X	\$27.85	600947	9.11	X	\$40.80	600969	10.94	X	\$52.35
45	600927	7.45	X	\$28.30	600948	9.31	X	\$42.40	600970	11.18	X	\$53.00
46	600928	7.61	X	\$29.00	600949	9.51	X	\$40.00	600971	11.42	X	\$56.70
48	600929	7.93	X	\$32.15	600950	9.91	X	\$37.40	600972	11.89	X	\$59.85
50	600930	8.25	X	\$37.40	600951	10.31	X	\$40.85	-	-	-	-
52	-	-	-	-	600952	10.71	X	\$41.60	-	-	-	-
54	600931	8.89	X	\$39.65	600953	11.11	X	\$47.05	600973	13.33	X	\$72.65
60	600932	9.84	X	\$34.65	600954	12.30	X	\$56.80	600974	14.76	X	\$95.55
72	600933	11.75	X	\$50.70	600955	14.69	X	\$90.15	-	-	-	-

80 Pitch														
Teeth	ITEM	Dia	Hub	Price	Teeth	ITEM	Dia	Hub	Price	Teeth	ITEM	Dia	Hub	Price
9	603331	3.34	W	\$15.35	16	603338	5.63	X	\$24.50	24	603346	8.2	X	\$39.15
10	603332	3.68	W	\$15.75	17	603339	5.95	X	\$27.95	25	603347	8.51	X	\$40.75
11	603333	4.01	W	\$16.15	18	603340	6.27	X	\$32.25	26	603348	8.83	X	\$38.70
12	603334	4.33	X	\$16.90	19	603341	6.59	X	\$35.95	27	603349	9.16	X	\$47.40
13	603335	4.66	X	\$18.25	20	603342	6.91	X	\$40.65	28	603350	9.48	X	\$49.00
14	603336	4.98	X	\$20.90	21	603343	7.23	X	\$44.40	29	601023	9.8	X	\$53.20
15	603337	5.3	X	\$22.95	22	603344	7.55	X	\$35.65	30	603351	10.11	X	\$56.25



All hubs furnished with standard keyway and two setscrews.

	V Hub	W Hub	X Hub
A	1 1/8"	A 1 5/8"	A 2"
B	1 7/16"	B 1 13/16"	B 2 1/2"
C	7/16"	C 7/16"	C 7/16"
D	3/4"	D 1"	D 1"
E	1 3/16"	E 1 7/16"	E 1 7/16"

Bore	V Hub	W Hub	X Hub
1/2"	600240	600245	-
9/16"	600241	600246	-
5/8"	600242	600247	600253
1 1/16"	601007	601014	601021
3/4"	600243	600248	600254
13/16"	601008	601015	601022
7/8"	600244	600249	600255
15/16"	-	601026	601027
1"	-	600250	600256
1 1/16"	-	601009	601018
1 1/8"	-	600251	600257
1 3/16"	-	601013	601019
1 1/4"	-	600252	600258
1 5/16"	-	-	601020
1 3/8"	-	-	601028
1 7/16"	-	-	601029
1 1/2"	-	-	601030
3/4" Hex	-	601016	-
7/8" Hex	-	601017	-
1 1/4" Hex	-	601010	-
1 1/8" 6 Spl	-	601012	-
Shpg.	1 lb.	1 1/2 lbs.	2 lbs.
Price	\$7.05	\$8.65	\$10.95

**1" 15 Spline Bore**  
**ITEM 602201**  
**\$16.45**  
 • W hub. Shpg. 1 1/2 lbs.

**1 3/4" 20 Spline Bore**  
**ITEM 600166**  
**\$28.95**  
 • X hub. Shpg. 2 lbs.