

DATA SHEET

Premium Efficiency Motor: **NAT12-36-56CB**

60 Hz

WorldWide Electric Corporation

1 (800) 808-2131

Worldwideelectric.net



Document Generated: 5-Aug-2025
Document ID:

Customer:

MOTOR INFORMATION	
HP	1/2
RPM	3600
Phase	3
Frequency	60 Hz
Voltage	230/460
Frame Size	56C
Enclosure	TEFC
Degree of Protection	IP43
Service Factor	1.15
Poles	2
Full Load Speed	3450
Insulation Class	F
Temp Rise	80°C
NEMA Code Letter	P
Duty Cycle	S1 / Continuous
Slip	0.04%
NEMA Design	B
Moment of Inertia	0.0277 lb.ft.^2
Sound Pressure Level	78 dB(A)
Max Ambient Temperature	40°C
Max Elevation	1000 m.a.s.l (3300 f.a.s.l)
Mounting	F1
Base	C-Face Removable Base
Rotation	Bi-Directional
Standard	NEMA MG-1
Approvals	CSA, CE

EFFICIENCY/POWER FACTOR		
LOAD	EFF	P. F.
100%	70.6 %	79
75%	67.7 %	71.4
50%	61.3 %	60.1

TORQUE		
FULL LOAD	LRT	BDT
0.76 lb.ft.	235 %	385 %

AMPERAGE INFORMATION		
	230V	460V
Full Load Amps	1.7	0.85
Locked Rotor Amps	10.84	5.42
No Load Current	1.06	0.53
Usable at 208V	--	

BEARING INFORMATION	
DE Bearing	6203 2RS
ODE Bearing	6203 2RS

ADDITIONAL DATA	
F2 Suitable	No
Shaft Material	1045 Carbon Steel
Connection Diagram	230 / 460 V - 9 Lead Y
Approximate Weight	19 lbs.

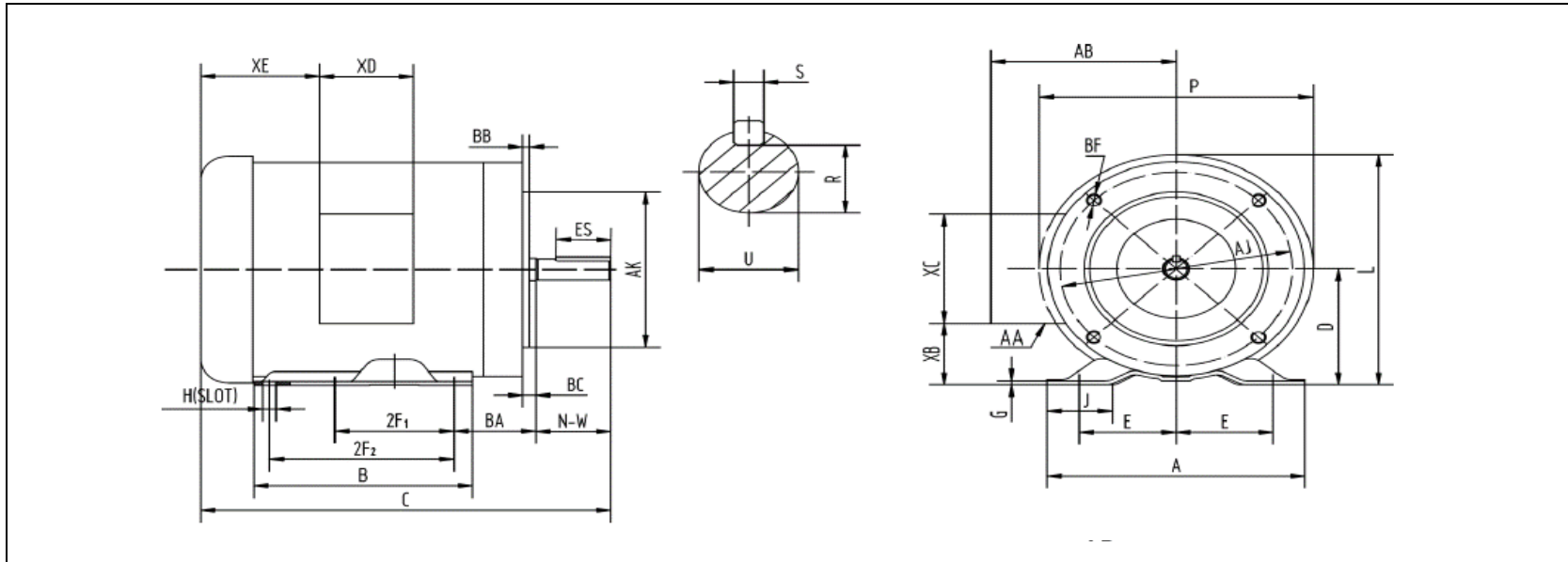
MOTOR DRAWING

Premium Efficiency Motor: **NAT12-36-56CB**

WorldWide Electric Corporation

1 (800) 808-2131

Worldwideelectric.net



DIMENSION - INCHES

MOUNTING					A	B	C	D	G	J	L	P	AB
E	2F1	2F2	H	BA									
2.44	3	5	0.34	2.75	6.54	6.54	11.9	3.5	0.1	1.65	7.4	7.3	5.2

SHAFT & KEY				
S	ES	R	N-W	U
0.188	1.41	0.517	1.88	0.625

TERMINAL BOX				
AA	XB	XC	XD	XE
3-0.88/2-1.109	1.65	3.7	3.2	2.15

FLANGE				
AK	AJ	BF	BB	BC
4.5	5.875	3/8-16	0.16	-0.19

PERFORMANCE CURVES

WorldWide Electric Corporation

1 (800) 808-2131

Worldwideelectric.net

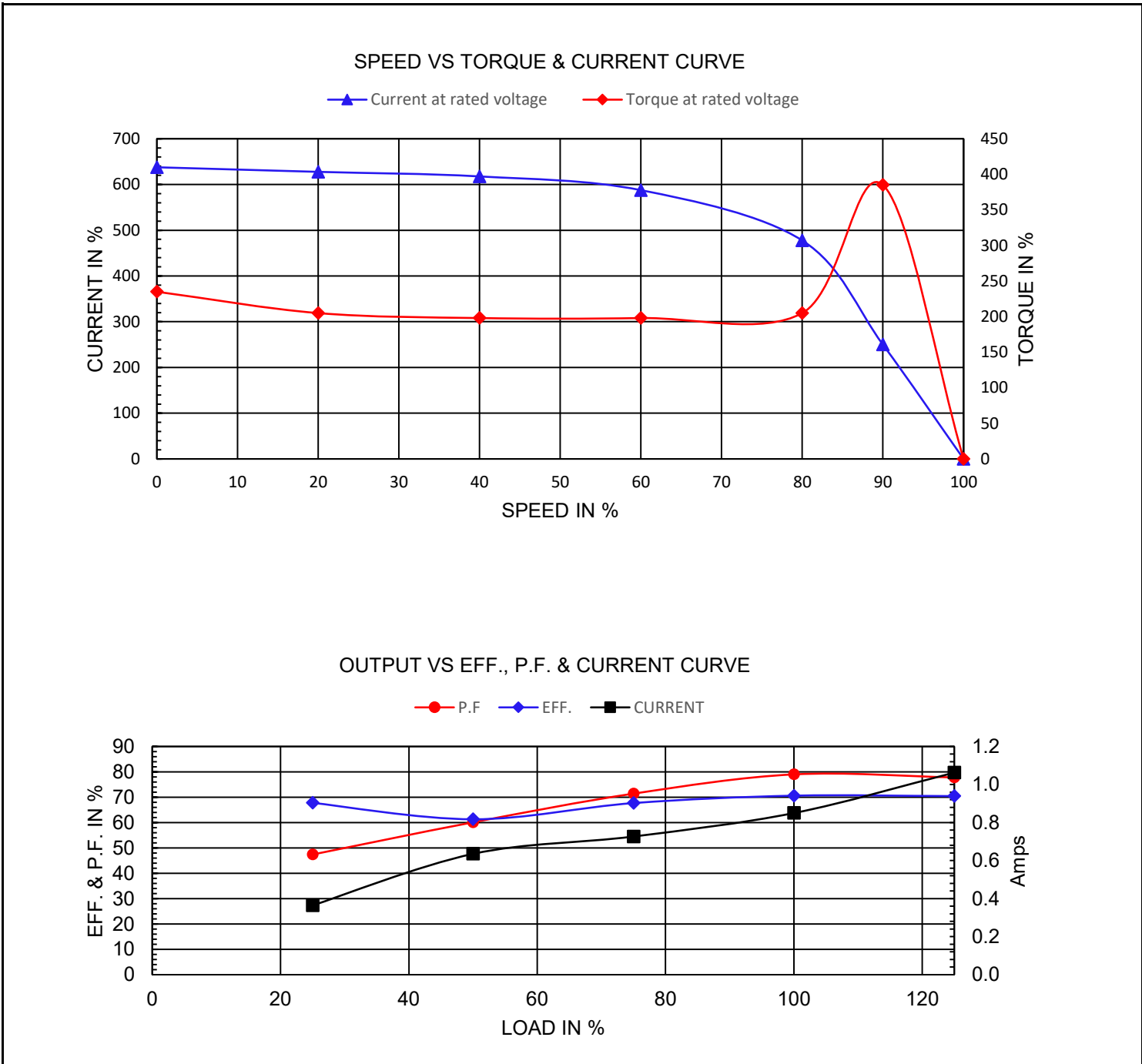


Premium Efficiency Motor:

NAT12-36-56CB

Document Generated: 5-Aug-2025	Customer:
Document ID:	

Motor Type			FL Speed	3450		
Output Rating (HP)	1/2		LRT (%FLT)	235	460 volt FLA	0.85
Full Load Torque	0.76	lb.ft	BDT (%FLT)	385	230 volt FLA	1.7
Rotor Wk^2	0.0277	lb-ft^2				



NAMEPLATE / WIRING

Premium Efficiency Motor: **NAT12-36-56CB**

WorldWide Electric Corporation

1 (800) 808-2131

Worldwideelectric.net



Document Generated: 5-Aug-2025
Document ID:

Customer:

SAMPLE NAMEPLATE DATA

		THREE PHASE INDUCTION MOTOR		 C US Energy Verified 256950		MADE IN CHINA																																	
							<table border="1"> <tr> <th>MODEL</th> <th>FRAME</th> </tr> <tr> <td>Hz</td> <td>ENCL. TEFC</td> </tr> <tr> <td>HP</td> <td>PH 3</td> </tr> <tr> <td>RPM</td> <td>DUTY CONT</td> </tr> <tr> <td>VOLTS</td> <td>CODE</td> </tr> <tr> <td>AMPS</td> <td>INS. F</td> </tr> <tr> <td></td> <td>DES.</td> </tr> <tr> <td>S. F.</td> <td>LB/WT</td> </tr> </table>		MODEL	FRAME	Hz	ENCL. TEFC	HP	PH 3	RPM	DUTY CONT	VOLTS	CODE	AMPS	INS. F		DES.	S. F.	LB/WT	<table border="1"> <tr> <th>LOW VOLTAGE</th> <th>HIGH VOLTAGE</th> </tr> <tr> <td>BLUE (T1) — LINE1</td> <td>BLUE (T1) — LINE1</td> </tr> <tr> <td>BROWN (T7) — LINE1</td> <td>WHITE (T2) — LINE2</td> </tr> <tr> <td>WHITE (T2) — LINE2</td> <td>ORANGE (T3) — LINE3</td> </tr> <tr> <td>RED (T8) — LINE2</td> <td>YELLOW (T4) — INS</td> </tr> <tr> <td>ORANGE (T3) — LINE3</td> <td>BROWN (T7) — INS</td> </tr> <tr> <td>YEL/BLA (T9) — LINE3</td> <td>BLACK (T5) — INS</td> </tr> <tr> <td>YELLOW (T4) — INS</td> <td>RED (T8) — INS</td> </tr> <tr> <td>BLACK (T5) — INS</td> <td>GRAY (T6) — INS</td> </tr> <tr> <td>GRAY (T6) — INS</td> <td>YEL/BLA (T9) — INS</td> </tr> </table>		LOW VOLTAGE	HIGH VOLTAGE	BLUE (T1) — LINE1	BLUE (T1) — LINE1	BROWN (T7) — LINE1	WHITE (T2) — LINE2	WHITE (T2) — LINE2	ORANGE (T3) — LINE3	RED (T8) — LINE2	YELLOW (T4) — INS	ORANGE (T3) — LINE3	BROWN (T7) — INS	YEL/BLA (T9) — LINE3
MODEL	FRAME																																						
Hz	ENCL. TEFC																																						
HP	PH 3																																						
RPM	DUTY CONT																																						
VOLTS	CODE																																						
AMPS	INS. F																																						
	DES.																																						
S. F.	LB/WT																																						
LOW VOLTAGE	HIGH VOLTAGE																																						
BLUE (T1) — LINE1	BLUE (T1) — LINE1																																						
BROWN (T7) — LINE1	WHITE (T2) — LINE2																																						
WHITE (T2) — LINE2	ORANGE (T3) — LINE3																																						
RED (T8) — LINE2	YELLOW (T4) — INS																																						
ORANGE (T3) — LINE3	BROWN (T7) — INS																																						
YEL/BLA (T9) — LINE3	BLACK (T5) — INS																																						
YELLOW (T4) — INS	RED (T8) — INS																																						
BLACK (T5) — INS	GRAY (T6) — INS																																						
GRAY (T6) — INS	YEL/BLA (T9) — INS																																						
NOM. EFF (60Hz) DE/ODE BRG.		ACCEPTABLE FOR FIELD WIRING THERMALLY PROTECTED : NONE																																					
MAX. AMB. 40°C Date Code XX/XXXXX																																							
SERIAL NO. XXXXXXXXXX				WorldWide Electric Corporation																																			

Model	NAT12-36-56CB	Frame	56C
Hz	60 Hz	Encl	TEFC
HP	1/2	PH	3
RPM	3450	DUTY	CONT
Voltage	230/460	Code	P
Amps	1.7/0.85	Ins Cl	F
IP	IP43	Design	B
S.F.	1.15	LB/WT	19 lbs.
Nom.Eff.	70.6%	DE Brng	6203 2RS
		ODE Brng	6203 2RS