

DATA SHEET

Premium Efficiency Motor: **NAT13-36-56CB**

60 Hz

WorldWide Electric Corporation

1 (800) 808-2131

Worldwideelectric.net



Document Generated: 5-Aug-2025
Document ID:

Customer:

MOTOR INFORMATION	
HP	1/3
RPM	3600
Phase	3
Frequency	60 Hz
Voltage	230/460
Frame Size	56C
Enclosure	TEFC
Degree of Protection	IP43
Service Factor	1.15
Poles	2
Full Load Speed	3450
Insulation Class	F
Temp Rise	80°C
NEMA Code Letter	T
Duty Cycle	S1 / Continuous
Slip	0.04%
NEMA Design	B
Moment of Inertia	0.0245 lb.ft.^2
Sound Pressure Level	78 dB(A)
Max Ambient Temperature	40°C
Max Elevation	1000 m.a.s.l (3300 f.a.s.l)
Mounting	F1
Base	C-Face Removable Base
Rotation	Bi-Directional
Standard	NEMA MG-1
Approvals	CSA, CE

EFFICIENCY/POWER FACTOR		
LOAD	EFF	P. F.
100%	63.6 %	79.7
75%	59.9 %	72.6
50%	52.4 %	62.7

TORQUE		
FULL LOAD	LRT	BDT
0.51 lb.ft.	220 %	390 %

AMPERAGE INFORMATION		
	230V	460V
Full Load Amps	1.3	0.65
Locked Rotor Amps	7.52	3.76
No Load Current	0.82	0.41
Usable at 208V	--	

BEARING INFORMATION	
DE Bearing	6203 2RS
ODE Bearing	6203 2RS

ADDITIONAL DATA	
F2 Suitable	No
Shaft Material	1045 Carbon Steel
Connection Diagram	230 / 460 V - 9 Lead Y
Approximate Weight	17.5 lbs.

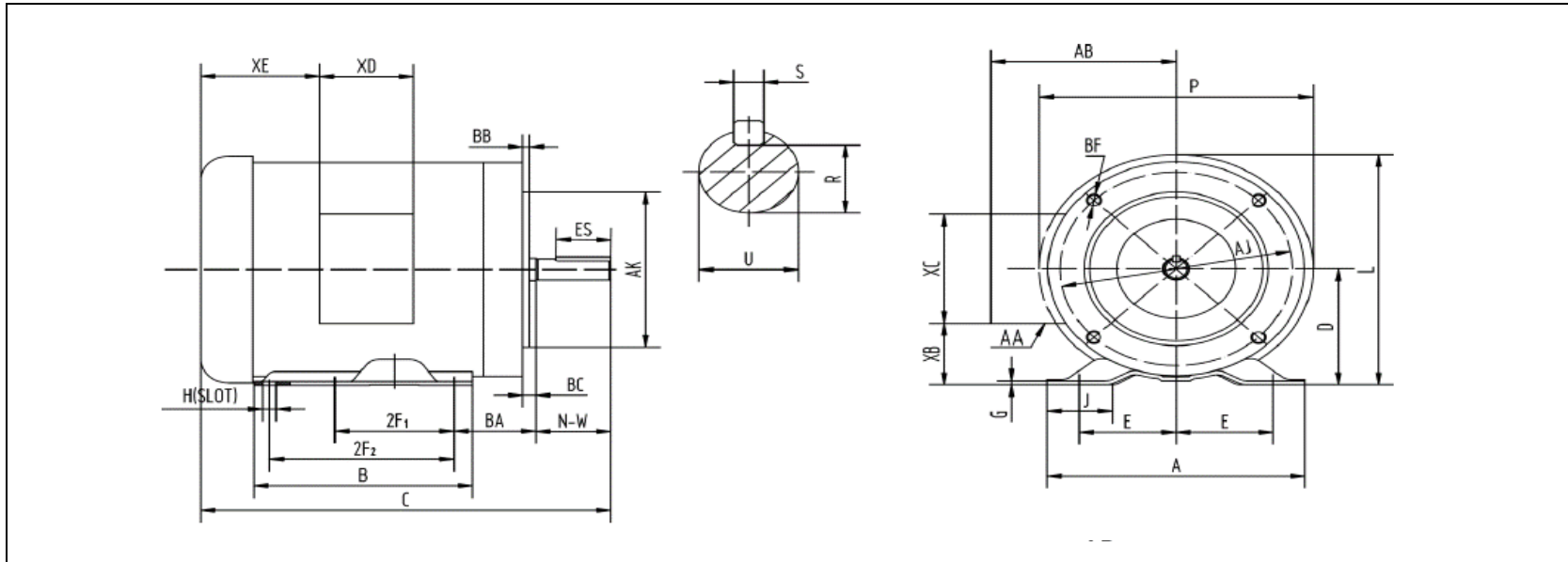
MOTOR DRAWING

Premium Efficiency Motor: **NAT13-36-56CB**

WorldWide Electric Corporation

1 (800) 808-2131

Worldwideelectric.net



DIMENSION - INCHES

MOUNTING					A	B	C	D	G	J	L	P	AB
E	2F1	2F2	H	BA									
2.44	3	5	0.34	2.75	6.54	6.54	11.9	3.5	0.1	1.65	7.4	7.3	5.2

SHAFT & KEY				
S	ES	R	N-W	U
0.188	1.41	0.517	1.88	0.625

TERMINAL BOX				
AA	XB	XC	XD	XE
3-0.88/2-1.109	1.65	3.7	3.2	2.15

FLANGE				
AK	AJ	BF	BB	BC
4.5	5.875	3/8-16	0.16	-0.19

PERFORMANCE CURVES

WorldWide Electric Corporation

1 (800) 808-2131

Worldwideelectric.net

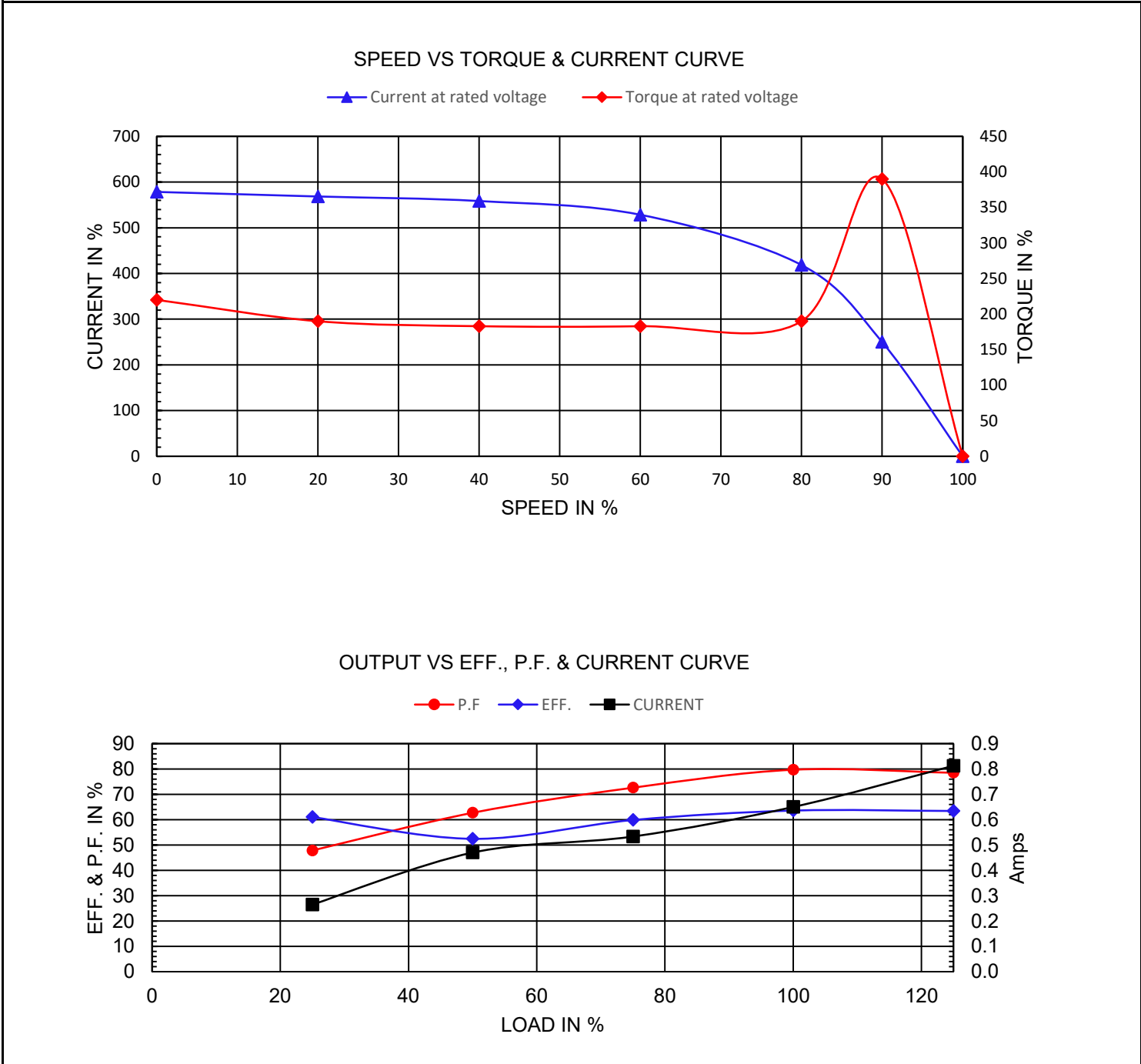


Premium Efficiency Motor:

NAT13-36-56CB

Document Generated: 5-Aug-2025	Customer:
Document ID:	

Motor Type			FL Speed	3450		
Output Rating (HP)	1/3		LRT (%FLT)	220	460 volt FLA	0.65
Full Load Torque	0.51	lb.ft	BDT (%FLT)	390	230 volt FLA	1.3
Rotor Wk^2	0.0245	lb-ft^2				



NAMEPLATE / WIRING

Premium Efficiency Motor: **NAT13-36-56CB**

WorldWide Electric Corporation

1 (800) 808-2131

Worldwideelectric.net



Document Generated: 5-Aug-2025
Document ID:

Customer:

SAMPLE NAMEPLATE DATA

		THREE PHASE INDUCTION MOTOR					
MODEL	FRAME	LOW VOLTAGE BLUE (T1) — LINE1 BROWN (T7) — WHITE (T2) — LINE2 RED (T8) — ORANGE (T3) — LINE3 YEL/BLA (T9) — YELLOW (T4) — BLACK (T5) — INS GRAY (T6) —		HIGH VOLTAGE BLUE (T1) — LINE1 WHITE (T2) — LINE2 ORANGE (T3) — LINE3 YELLOW (T4) — BROWN (T7) — INS BLACK (T5) — INS RED (T8) — INS GRAY (T6) — YEL/BLA (T9) — INS		MADE IN CHINA	
Hz	ENCL. TEFC						
HP	PH 3						
RPM	DUTY CONT						
VOLTS	CODE						
AMPS	INS. F						
	DES.						
S. F.	LB/WT						
NOM. EFF (60Hz)	DE/ODE BRG.	ACCEPTABLE FOR FIELD WIRING THERMALLY PROTECTED : NONE					
MAX. AMB. 40°C	Date Code XX/XXXXX						
SERIAL NO. XXXXXXXXXX		WorldWide Electric Corporation					

Model	NAT13-36-56CB	Frame	56C
Hz	60 Hz	Encl	TEFC
HP	1/3	PH	3
RPM	3450	DUTY	CONT
Voltage	230/460	Code	T
Amps	1.3/0.65	Ins Cl	F
IP	IP43	Design	B
S.F.	1.15	LB/WT	17.5 lbs.
Nom.Eff.	63.6%	DE Brng	6203 2RS
		ODE Brng	6203 2RS