

DATA SHEET

Premium Efficiency Motor: **NAT34-18-56CB**

60 Hz

WorldWide Electric Corporation

1 (800) 808-2131

Worldwideelectric.net



Document Generated: 5-Aug-2025
Document ID:

Customer:

MOTOR INFORMATION	
HP	3/4
RPM	1800
Phase	3
Frequency	60 Hz
Voltage	230/460
Frame Size	56C
Enclosure	TEFC
Degree of Protection	IP43
Service Factor	1.15
Poles	4
Full Load Speed	1725
Insulation Class	F
Temp Rise	80°C
NEMA Code Letter	L
Duty Cycle	S1 / Continuous
Slip	0.04%
NEMA Design	B
Moment of Inertia	0.0485 lb.ft.^2
Sound Pressure Level	68 dB(A)
Max Ambient Temperature	40°C
Max Elevation	1000 m.a.s.l (3300 f.a.s.l)
Mounting	F1
Base	C-Face Removable Base
Rotation	Bi-Directional
Standard	NEMA MG-1
Approvals	CSA, CE

EFFICIENCY/POWER FACTOR		
LOAD	EFF	P. F.
100%	74.8 %	76.2
75%	74.7 %	67.1
50%	71.6 %	53.4

TORQUE		
FULL LOAD	LRT	BDT
2.25 lb.ft.	240 %	315 %

AMPERAGE INFORMATION		
	230V	460V
Full Load Amps	2.6	1.3
Locked Rotor Amps	13.16	6.58
No Load Current	1.6	0.8
Usable at 208V	--	

BEARING INFORMATION	
DE Bearing	6203 2RS
ODE Bearing	6203 2RS

ADDITIONAL DATA	
F2 Suitable	No
Shaft Material	1045 Carbon Steel
Connection Diagram	230 / 460 V - 9 Lead Y
Approximate Weight	21.5 lbs.

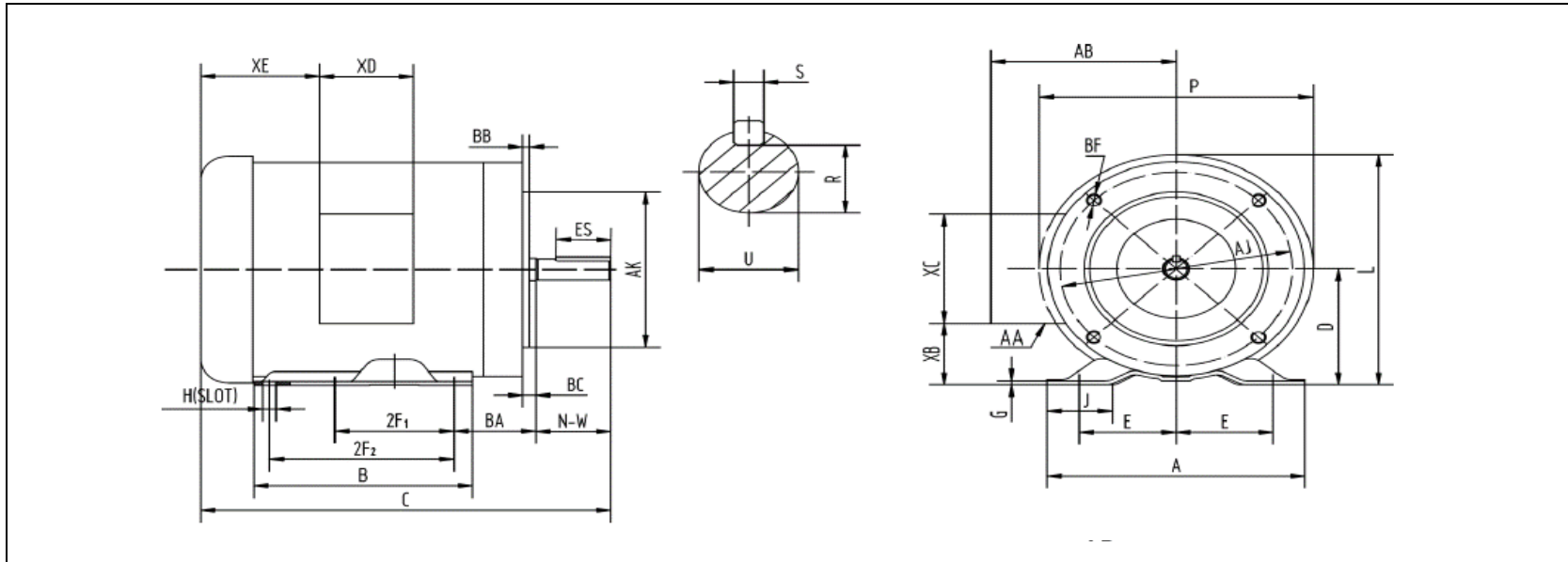
MOTOR DRAWING

Premium Efficiency Motor: **NAT34-18-56CB**

WorldWide Electric Corporation

1 (800) 808-2131

Worldwideelectric.net



DIMENSION - INCHES

MOUNTING					A	B	C	D	G	J	L	P	AB
E	2F1	2F2	H	BA									
2.44	3	5	0.34	2.75	6.54	6.54	11.9	3.5	0.1	1.65	7.4	7.3	5.2

SHAFT & KEY				
S	ES	R	N-W	U
0.188	1.41	0.517	1.88	0.625

TERMINAL BOX				
AA	XB	XC	XD	XE
3-0.88/2-1.109	1.65	3.7	3.2	2.15

FLANGE				
AK	AJ	BF	BB	BC
4.5	5.875	3/8-16	0.16	-0.19

PERFORMANCE CURVES

WorldWide Electric Corporation

1 (800) 808-2131

Worldwideelectric.net



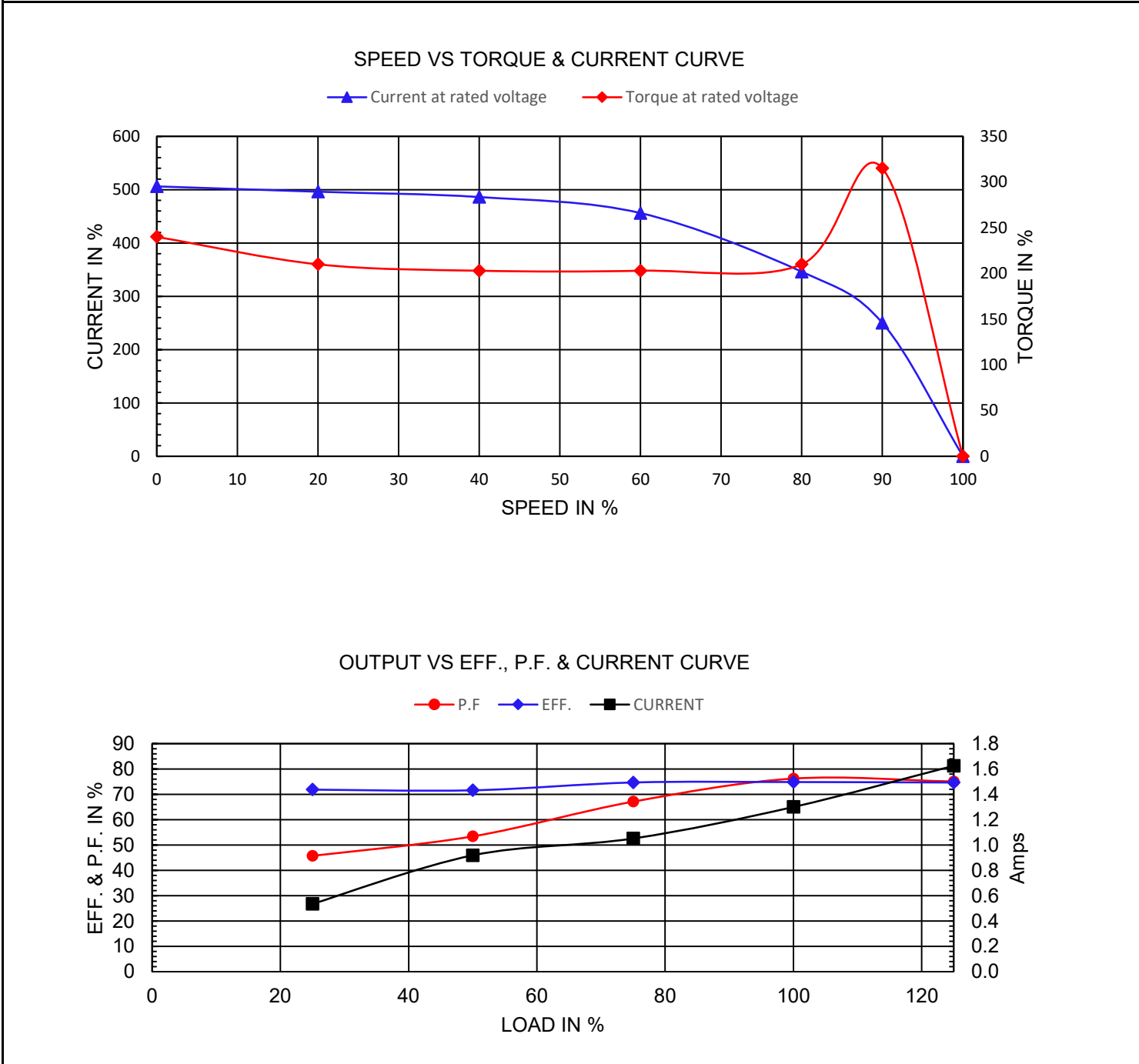
Premium Efficiency Motor:

NAT34-18-56CB

Document Generated: 5-Aug-2025
Document ID:

Customer:

Motor Type			FL Speed	1725		
Output Rating (HP)	3/4		LRT (%FLT)	240	460 volt FLA	1.3
Full Load Torque	2.25	lb.ft	BDT (%FLT)	315	230 volt FLA	2.6
Rotor Wk^2	0.0485	lb-ft^2				



NAMEPLATE / WIRING

Premium Efficiency Motor: **NAT34-18-56CB**

WorldWide Electric Corporation

1 (800) 808-2131

Worldwideelectric.net



Document Generated: 5-Aug-2025
Document ID:

Customer:

SAMPLE NAMEPLATE DATA

		THREE PHASE INDUCTION MOTOR		 Energy Verified 256950		MADE IN CHINA																																																											
							<table border="1"> <tr> <th>MODEL</th> <th>FRAME</th> </tr> <tr> <td>Hz</td> <td>ENCL. TEFC</td> </tr> <tr> <td>HP</td> <td>PH 3</td> </tr> <tr> <td>RPM</td> <td>DUTY CONT</td> </tr> <tr> <td>VOLTS</td> <td>CODE</td> </tr> <tr> <td>AMPS</td> <td>INS. F</td> </tr> <tr> <td></td> <td>DES.</td> </tr> <tr> <td>S. F.</td> <td>LB/WT</td> </tr> <tr> <td>NOM. EFF (60Hz)</td> <td>DE/ODE BRG.</td> </tr> <tr> <td>MAX. AMB. 40°C</td> <td>Date Code XX/XXXXX</td> </tr> <tr> <td colspan="2">SERIAL NO. XXXXXXXXXX</td> </tr> </table>		MODEL	FRAME	Hz	ENCL. TEFC	HP	PH 3	RPM	DUTY CONT	VOLTS	CODE	AMPS	INS. F		DES.	S. F.	LB/WT	NOM. EFF (60Hz)	DE/ODE BRG.	MAX. AMB. 40°C	Date Code XX/XXXXX	SERIAL NO. XXXXXXXXXX		<table border="0"> <tr> <th colspan="2">LOW VOLTAGE</th> <th colspan="2">HIGH VOLTAGE</th> </tr> <tr> <td>BLUE (T1)</td> <td rowspan="2">] LINE1</td> <td>BLUE (T1)</td> <td>LINE1</td> </tr> <tr> <td>BROWN (T7)</td> <td>WHITE (T2)</td> <td>WHITE (T2)</td> <td>LINE2</td> </tr> <tr> <td>WHITE (T2)</td> <td rowspan="2">] LINE2</td> <td>ORANGE (T3)</td> <td>LINE3</td> </tr> <tr> <td>RED (T8)</td> <td>YELLOW (T4)</td> <td>YELLOW (T4)</td> <td>INS</td> </tr> <tr> <td>ORANGE (T3)</td> <td rowspan="2">] LINE3</td> <td>BROWN (T7)</td> <td>INS</td> </tr> <tr> <td>YEL/BLA (T9)</td> <td>BLACK (T5)</td> <td>BLACK (T5)</td> <td>INS</td> </tr> <tr> <td>YELLOW (T4)</td> <td rowspan="2">] INS</td> <td>RED (T8)</td> <td>INS</td> </tr> <tr> <td>BLACK (T5)</td> <td>GRAY (T6)</td> <td>GRAY (T6)</td> <td>INS</td> </tr> <tr> <td>GRAY (T6)</td> <td></td> <td>YEL/BLA (T9)</td> <td>INS</td> </tr> </table>		LOW VOLTAGE		HIGH VOLTAGE		BLUE (T1)] LINE1	BLUE (T1)	LINE1	BROWN (T7)	WHITE (T2)	WHITE (T2)	LINE2	WHITE (T2)] LINE2	ORANGE (T3)	LINE3	RED (T8)	YELLOW (T4)	YELLOW (T4)	INS	ORANGE (T3)] LINE3	BROWN (T7)	INS	YEL/BLA (T9)	BLACK (T5)	BLACK (T5)	INS	YELLOW (T4)] INS	RED (T8)	INS	BLACK (T5)
MODEL	FRAME																																																																
Hz	ENCL. TEFC																																																																
HP	PH 3																																																																
RPM	DUTY CONT																																																																
VOLTS	CODE																																																																
AMPS	INS. F																																																																
	DES.																																																																
S. F.	LB/WT																																																																
NOM. EFF (60Hz)	DE/ODE BRG.																																																																
MAX. AMB. 40°C	Date Code XX/XXXXX																																																																
SERIAL NO. XXXXXXXXXX																																																																	
LOW VOLTAGE		HIGH VOLTAGE																																																															
BLUE (T1)] LINE1	BLUE (T1)	LINE1																																																														
BROWN (T7)		WHITE (T2)	WHITE (T2)	LINE2																																																													
WHITE (T2)] LINE2	ORANGE (T3)	LINE3																																																														
RED (T8)		YELLOW (T4)	YELLOW (T4)	INS																																																													
ORANGE (T3)] LINE3	BROWN (T7)	INS																																																														
YEL/BLA (T9)		BLACK (T5)	BLACK (T5)	INS																																																													
YELLOW (T4)] INS	RED (T8)	INS																																																														
BLACK (T5)		GRAY (T6)	GRAY (T6)	INS																																																													
GRAY (T6)		YEL/BLA (T9)	INS																																																														
ACCEPTABLE FOR FIELD WIRING THERMALLY PROTECTED : NONE																																																																	
WorldWide Electric Corporation																																																																	

Model	NAT34-18-56CB	Frame	56C
Hz	60 Hz	Encl	TEFC
HP	3/4	PH	3
RPM	1725	DUTY	CONT
Voltage	230/460	Code	L
Amps	2.6/1.3	Ins Cl	F
IP	IP43	Design	B
S.F.	1.15	LB/WT	21.5 lbs.
Nom.Eff.	74.8%	DE Brng	6203 2RS
		ODE Brng	6203 2RS