



Welded Cylinders

WT Welded - 3000 PSI

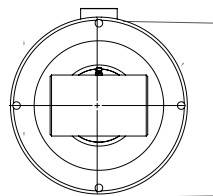
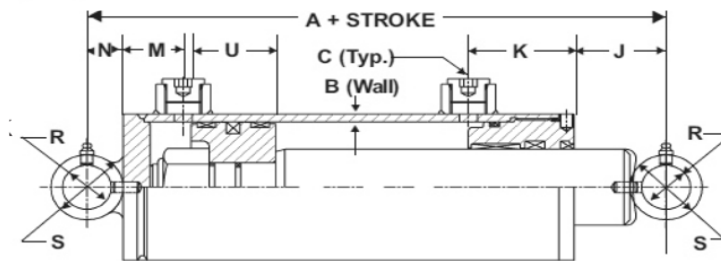
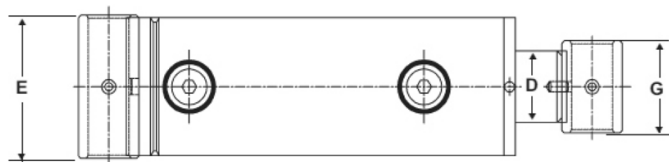
Featuring welded cross-tube mounts on the rod and base ends. Heavy-duty piston with piston-stem, complete with wear rings to reduce friction. The screw-in gland is removable from the rod end for servicing convenience. Available with SAE porting on 5", 6", and 8" bore sizes.

- Filtration: 15 microns or better
- Intended Use: Double acting applications
- Piston: Ductile iron with wear rings
- Gland: Ductile iron, screw-in design (with externally thread collar)
- Tube: Precision honed steel
- Rod: Ground and polished chromed steel, minimum 75,000 PSI yield
- Base Plate: Steel
- End Mounts: Steel cross tubes with grease zerk
- Spacer Tube: Steel on 48" stroke and above
- Gland Seal: Polyurethane loaded u-cup rod seal
- Wiper: Polyurethane, single-lipped, snap-in wiper
- Piston Seal: Double-acting, polyester face seal with rubber energizer
- 3 year warranty



Dimensions

Bore	A*	B	D	E	G	J**	K	M	N	R***	S	T	U
2.0	7	0.188	1.25	2.62	1.75	1.875	2.440	0.970	0.63	0.765	1.25	NA	1.000
2.5	8	0.188	1.50	3.125	2.00	2.000	3.120	1.040	0.63	0.765	1.25	NA	1.000
3.0	8	0.188	1.75	3.50	2.25	2.1875	0.910	1.250	0.75	1.015	1.50	NA	1.750
3.5	8	0.188	2.00	4.00	2.50	2.310	1.600	1.310	0.75	1.015	1.50	NA	1.750
4.0	9	0.250	2.25	4.625	4.00	2.185	2.073	1.610	1.00	1.265	2.00	NA	1.875
5.0	11	0.250	2.50	5.75	4.00	3.000	2.750	1.500	1.25	1.515	2.50	6.00	1.626
6.0	11	0.250	3.00	6.75	4.00	3.000	2.250	1.500	1.32	1.515	2.50	7.25	2.250
8.0	16	0.375	4.00	9.00	5.00	3.313	3.500	3.187	2.00	2.515	4.00	9.91	4.000



* For dimension A: a 2.00' (50.8mm) spacer is added at 48.00 (1219.2mm) stroke, and an additional 1.00* (25.4mm) is added for each additional 6.00' (152.4mm) of stroke thereafter to a 6.00' (152.4mm) maximum spacer.

** For dimension J: a 2.0" bore with 1.0" pins, "J" = 2.32' for 2.5' bore with 1.0' pins, "J" = 3.00'.

*** For dimension R: a 2.0' and 2.5' bore cylinders, R = 1.015' and S = 1.5000' (25.8mm).

Note: 5', 6', and 8' bores have an externally mounted retainer ring.



1-800-800-1810 sales@baileyintl.com baileyintl.com



WT Welded Cylinders_Chief_11.2025a