

**DESCRIPTION**

A solenoid-operated, 4-way, 3-position, direct-acting, spool-type, open center, screw-in hydraulic cartridge valve.

**OPERATION**

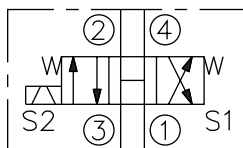
When de-energized, **SV10-47B** ports are open and common to ③ and ①.

When coil #1 is energized, flow is allowed from ③ to ④, and from ② to ①.

When coil #2 is energized, flow is allowed from ③ to ②, and from ④ to ①.

In circuits where work port flows are unequal due to cylinder ratios, the higher return flow should be directed to port ②.

**While ① may be fully pressurized, it is not intended for use as the valve's inlet.**



**Important:**  
**Do not overtorque.**

