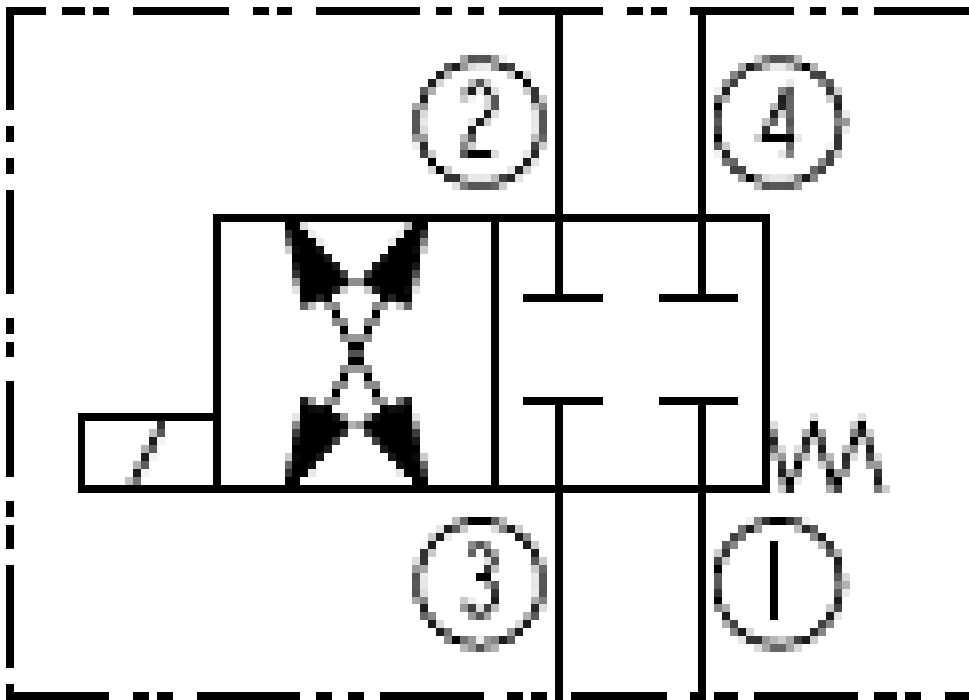


Surplus Center Item Number: 900967

SV10-41



Description

A solenoid-operated, 4 port, 2 position, direct-acting spool type, screw in hydraulic cartridge valve.

Operation

When de-energized, the SV10-41 blocks flow to all ports. When energized, the spool shifts to open flow between port 3 and port 4, as well as from port 2 to port 1.